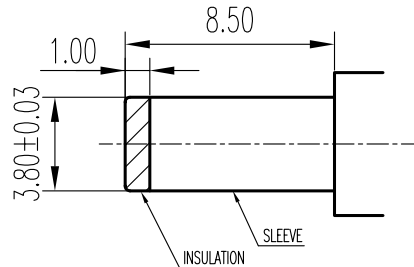
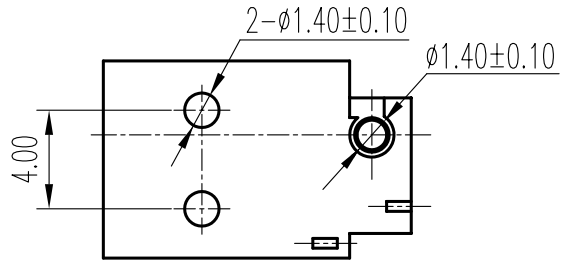
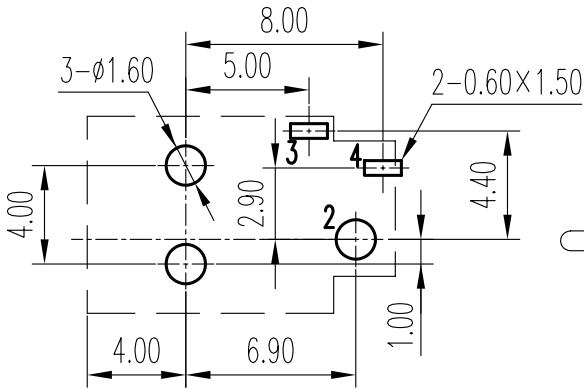


B-B 剖面图



配套插头 MATE PLUG



安装孔 PIERCING PLAN

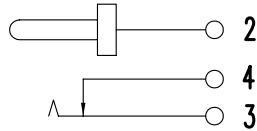


示意图 SCHEMATIC

规格 Specifications

额定负荷 Ratings	DC 12 V 1.0 A	
初期接触电阻 Initial Contact Resistance	30 mΩ Max.	
绝缘电阻 Insulation Resistance	DC 500V 60 Sec 100 MΩ Min.	
抗电强度 Dielectric Voltage	AC 500 V (50~60HZ) 60 Sec.	
插拔力 Insertion and Extraction force	插入力 Insertion force	0.2—3.0 Kgf
	拔出力 Extraction force	0.2—3.0 Kgf
负荷寿命 Operating Life With Load	5000 次 Cycles	

序 NO.	零件 PART	材料 MATERIAL	数量 QTY	备注 REMARKS	标号 REV	内容 DESCRIPTION	签名 SIGN.	日期 DATE
4	BREAK TERMINAL	C2680	1	Ag PLATED	A02	机械寿命变为负荷寿命及增加零件列表见 ① 插拔力 0.4-3.0Kgf 变更为 0.2-3.0Kgf 见 ① 绝缘阻抗变更为绝缘电阻见 ① 接触阻抗 50mΩ 变更为初期接触电阻 30mΩ 见 ①	曹文斌	06-06-03
3	SLEEVE TERMINAL	C5210	1	Ag PLATED	A01		张渠江	21 MAR 05
2	PIN	C3602	1	Ni PLATED				
1	HOUSING	PA	1	BLACK				
					DWG NO.	ITEM2479		

TOLERANCES UNLESS OTHERWISE SPEC.		TITLE	DC POWER JACKS		ITEM NO	DC-099	
UNDER 1	± 0.10	DRAWN	曹文斌	06-06-03	VERSION	A02	PAGE 1 OF 1
1 - 10	± 0.30	REVIEWED	张念明	06-06-03	SCALE		UNIT mm
OVER 10	± 0.50	APPROVED	高洪	06-06-03	PROJECTION		

COMAX ELECTRONICS (HUIZHOU) CO.,LTD.