

① 规格 Specifications

额定负荷 Ratings	DC6 V 0.1A
初始接触电阻 Initial Contact Resistance	100 mΩ Max.
绝缘电阻 Insulation Resistance	DC 500 V 60 ± 5 Sec. 100 MΩ Min.
抗电强度 Dielectric Voltage	AC 250 V(50~60HZ) 60 ± 5 Sec.
操作力 Operating Force	30 ± 20 gf
回复力 Releasing Force	8.0 gf Min.
动作位置 Operating Position	6.70 ± 0.50 mm
自由位置 Free Position	8.50mm Max.
接触行程 Pre Travel	2.5 mm Max.
过行程 Over Travel	0.3 mm Min.
差程 Movement Differential Travel	2.1 mm Max.
负荷寿命 Operating Life With Load	10,000 *cycles

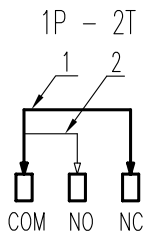
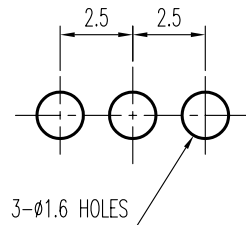


示意图 SCHEMATIC



安装孔 PIERCING PLAN

①

5	端子	TERMINAL	C2680R	3	Ag PLATED				
4	弹片	SPRING PLATE	C1720	1	Ag CLAD				
3	杠杆	LEVER	POM	1	BLACK C	A01	增加规格表栏和材料明细栏 见①	刘红梅	06-05-10
2	胶盖	COVER	POM	1	BLACK C	01		赖立辉	2000/8/4
1	胶壳	HOUSING	PBT	1	BLACK C	标号REV	内容 DESCRIPTION	签名 SIGN.	日期 DATE
序NO.	零件 PART	材料 MATERIAL	数量 QTY	备注 REMARKS	DWG NO. ITEM1805				

TOLERANCES UNLESS OTHERWISE SPEC.		TITLE	MICRO SWITCH		ITEM NO	MS-10102			
UNDER 1	± 0.10	DRAWN	刘红梅	06-05-10	VERSION	A01	PAGE	1	OF 1
1 - 10	± 0.30	REVIEWED	张念明	06-05-11	SCALE		UNIT	mm	
OVER 10	± 0.50	APPROVED	林高全	06-05-11	PROJECTION				

COMAX ELECTRONICS (HUIZHOU) CO.,LTD.