

4P - 2T

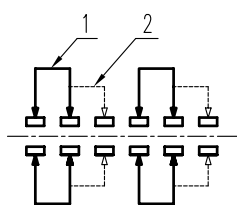
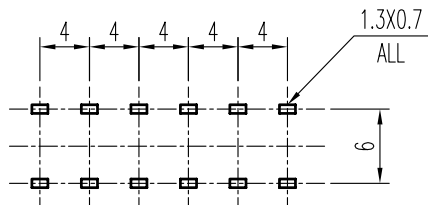


示意图 SCHEMATIC



安装孔 PIERCING PLAN

规格 Specifications

额定负荷 Ratings	DC 25 V 1 A
初期接触电阻 Initial Contact Resistance	30 mΩMax.
绝缘电阻 Insulation Resistance	DC 500 V 60 Sec. 100 MΩ Min.
抗电强度 Dielectric Voltage	AC 500 V (50~60HZ) 60 Sec.

操作力 Operating Force(gf)	A ← B
	400 ± 150
	(Q) 250 ± 100
机械寿命 Operating Life Without Load	10,000 次 Cycles

8	接触片 CONTACT	C2680R	4	Ag PLATED
7	弹簧B SPRING B	SUS	4	NATURAL
6	锁针 LOCK HOOK	STEEL	1	Ni PLATED
5	弹簧A SPRING A	STEEL	1	Ni PLATED
4	端子 TERMINAL	C2680R	12	Ag PLATED
3	基板 TERMINAL BASE	PHENOL RESIN	1	YELLOW
2	胶柄 KNOB	POM	1	NATURAL
1	胶壳 HOUSING	PC	1	BLACK C
序号 NO.	零件 PART	材料 MATERIAL	数量 QTY	备注 REMARKS

A02	负荷寿命修正为机械寿命见 ①	郭先琼	2006-11-4
A01	修改内容见 ②	曹文斌	06-04-11
01	修改内容见 ③	赖立辉	20 FEB 97
标号 REV	内容 DESCRIPTION	签名 SIGN.	日期 DATE
DWG NO. ITEM1303			

TOLERANCES UNLESS OTHERWISE SPEC.		TITLE	PUSH BUTTON SWITCH		ITEM NO	PB-42G02-L NS	
UNDER 1	± 0.10	DRAWN	郭先琼	2006-11-4	VERSION	A02	PAGE 1 OF 1
1 - 10	± 0.30	REVIEWED	张念明	2006-11-4	SCALE		UNIT mm
OVER 10	± 0.50	APPROVED	刘瑞富	2006-11-4	PROJECTION		

COMAX ELECTRONICS (HUIZHOU) CO.,LTD.