

2 P - 2 T

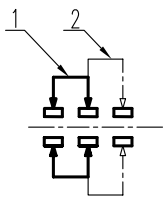
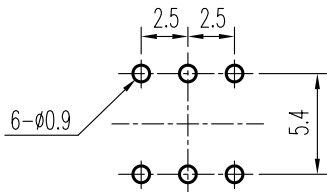


示意图 SCHEMATIC



安装孔 PIERCING PLAN

规格 Specifications

额定负荷 Ratings	DC 30 V 0.1 A
初期接触电阻 Initial Contact Resistance	30 mΩ Max.
绝缘电阻 Insulation Resistance	DC 500 V 60 Sec. 100 MΩ Min.
抗电强度 Dielectric	AC 500 V (50~60HZ) 60 Sec.
操作力 Operating Force (gf)	200±100 gf
负荷寿命 Operating Life With Load	10000 次 Cycles

Ⓐ

7	端子	TERMINAL	C2680R	6	Ag PLATED				
6	弹簧	SPRING	SUS	1	NATURAL				
5	胶壳	HOUSING	PBT	1	BLACK C				
4	接触片	CONTACT	C5210R	2	Ag CLAD	A01	修改零件列表见Ⓐ	曹文斌	06-04-18
3	锁针	LOCK HOOK	SUS	1	NATURAL		机械寿命变为负荷寿命见Ⓐ		
2	胶柄	KNOB	POM	1	BLACK C	02		何锦洪	10 SEP 04
1	胶盖	COVER	POM	1	GREY	标号 REV	内容 DESCRIPTION	签名 SIGN.	日期 DATE
序 NO.	零件 PART	材料 MATERIAL	数量 QTY	备注 REMARKS	DWG NO. ITEM0293				

TOLERANCES UNLESS OTHERWISE SPEC.		TITLE	PUSH SWITCH		ITEM NO	PS-2201-L NS			
UNDER 1	± 0.10	DRAWN	曹文斌	06-04-18	VERSION	A01	PAGE	1	OF 1
1 - 10	± 0.30	REVIEWED	张念明	06-04-18	SCALE		UNIT	mm	
OVER 10	± 0.50	APPROVED	林高全	06-04-18	PROJECTION				

COMAX ELECTRONICS (HUIZHOU) CO.,LTD.