

SPECIFICATION**SPC-3694 (version 01)**

Item Name : TACT SWITCHES

Item No. : RS-062R01NA1-URT

1. Rated voltage and current : DC 12 V , 50 mA

2. Function : 1 P(Pole) - 1 T(Throw)

3. Timing : NON-SHORTING

4. Electrical

performance	Test conditions	Performance
4.1 Contact resistance	Being measured at 1KHz \pm 200 Hz at no load.	Max. 100 m Ω
4.2 Insulation resistance	Being measured with an insulation measuring device of DC 100V between any open terminals and between the terminal and the frame for 1 minute \pm 5 seconds.	Min. 100 M Ω
4.3 Dielectric strength	Withstand AC 250V (50-60Hz) for 1 minute being applied between any open terminals and between the terminal and the frame.	Not breaking insulation

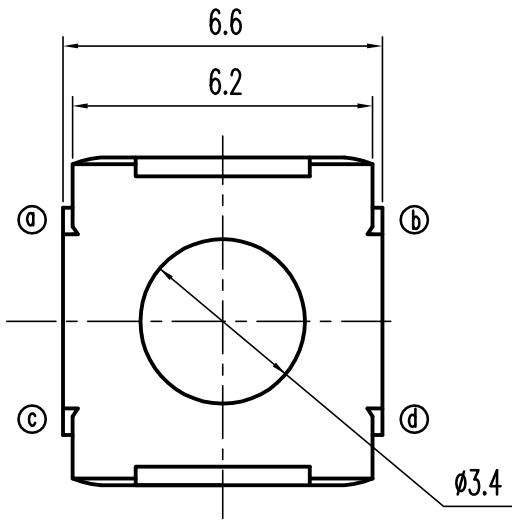
5. Mechanical

performance	Test conditions	Performance
5.1 Operating force (gf)	The force is applied to the top of knob in operating direction (full travel)	160 \pm 30

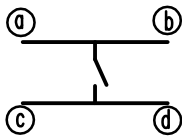
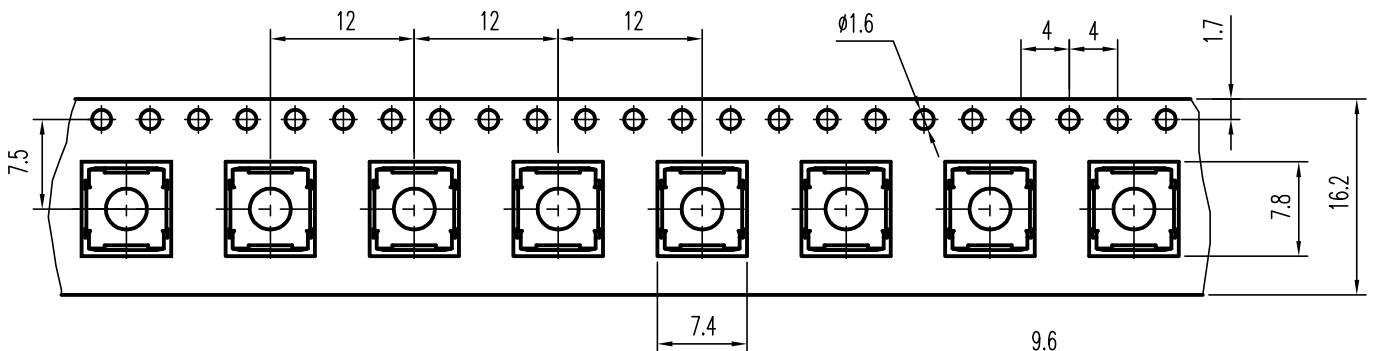
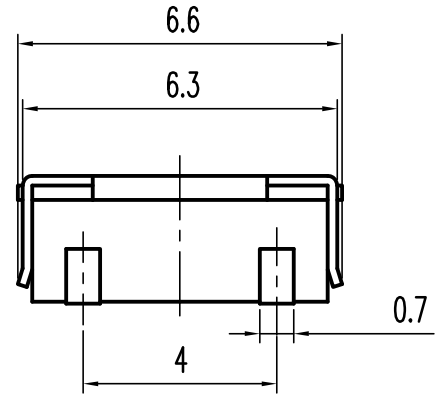
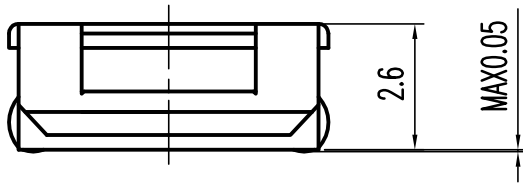
6. Durability :

	Test conditions	Performance
Operating life	100,000 cycles operating at a rate of 15-20 cycles per minute, without load.	(1) Contact resistance : Max. 500 m Ω (2) Insulation resistance : Min. 10 M Ω (3) Withstand voltage : AC 250V, 1 minute, not breaking insulation. (4) Operating force : -30% or less of initial value. (5) There shall be no defects in appearance Or in the mechanical functions.

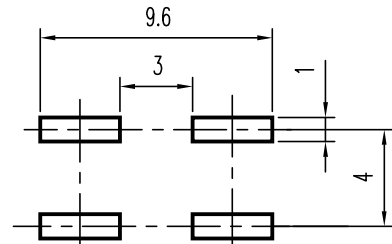
7. Solderability : 260 \pm 5 $^{\circ}$ C , 5 \pm 0.5 second.8. Practical temperature range : -20 $^{\circ}$ C --- +70 $^{\circ}$ C.



1, TRAVEL : $0.25^{+0.20}_{-0.10}$



SCHEMATIC



PIERCING PLAN

NO	PART	MATERIAL	QTY	REMARKS	REV	DESCRIPTION	SIGN.	DATE
					VERSION 01			
						DWG NO.	ITEM2195	
TOLERANCES UNLESS OTHERWISE SPEC.				TITLE	TACT SWITCH		ITEM NO.	RS-062R01NA1-U RT
UNDER 1	± 0.10			DRAWN	Sun	09 MAY 03	SCALE	8 : 1
1 - 10	± 0.30			APPROVED			UNIT	mm
OVER 10	± 0.50						PROJECTION	

COMAX INDUSTRIAL CO., LTD.