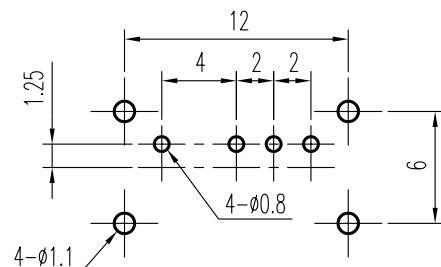


示意图 SCHEMATIC



①

安装孔 PIERCING PLAN

① 规格 Specifications

额定负荷 Ratings	DC 30 V 0.3 A
初期接触电阻 Initial Contact Resistance	30 mΩ Max.
绝缘电阻 Insulation Resistance	DC500 V 60 Sec. 100 MΩ Min.
抗电强度 Dielectric Voltage	AC 500 V (50~60HZ) 60 Sec.

		(L)	
操作力 Operating Force (gf)	A → B	B → A	A → B
	C → B	B → C	C → B
负荷寿命 Operating Life With Load	200±100	300±150	150±50 250±100
		10,000 Cycles	

序 NO.	零件 PART	材料 MATERIAL	数量 QTY	备注 REMARKS
7	钢珠 STEEL BALL	STEEL	1	NATURAL
6	弹簧 SPRING	STEEL	1	NATURAL
5	端子 TERMINAL	C2680R	4	Ag PLATED
4	基板 TERMINAL BASE	PHENOL RESIN	1	YELLOW
3	接触片 CONTACT	C5210R	1	Ag CLAD
2	胶柄 KNOB	P O M	1	G 2 - 12
1	铁壳 FRAME	S P C C	1	Sn PLATED

A01	ADD: 规格 Specifications	见 ①	刘红梅	06-06-16
01	修改材料表栏	见 ①	赖立辉	16 MAY 92
标号 REV	内容 DESCRIPTION	签名 SIGN.	日期 DATE	

TOLERANCES UNLESS OTHERWISE SPEC.		TITLE	SIDE KNOB SLIDE SWITCH		ITEM NO	SK-13D04-G		
UNDER 1	± 0.10	DRAWN	刘红梅	06-06-16	VERSION	A01	PAGE 1	OF 1
1 - 10	± 0.30	REVIEWED	张念明	06-06-16	SCALE		UNIT	mm
OVER 10	± 0.50	APPROVED	高洪	06-06-17	PROJECTION			

**COMAX** ELECTRONICS (HUIZHOU) CO.,LTD.