

规格 Specifications

额定负荷 Ratings	DC 30 V 0.3 A
初期接触电阻 Initial Contact Resistance	30 mΩ Max.
绝缘电阻 Insulation Resistance	DC 500 V 60 Sec. 100 MΩ Min.
抗电强度 Dielectric	AC 500 V (50~60HZ) 60 Sec.

操作力 Operating Force (gf)	A → B	B → A
	C → B	B → C
负荷寿命 Operating Life With Load	150±100	150±100

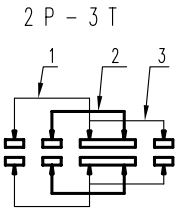
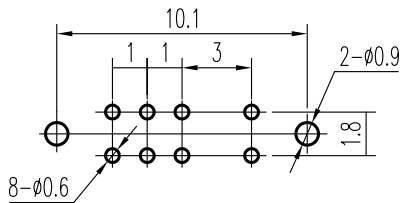


示意图 SCHEMATIC



安装孔 PIERCING PLAN

6	弹片 SPRING PLATE	SUS	1	NATURAL
5	端子 TERMINAL	C2680R	8	Ag PLATED
4	基板 TERMINAL BASE	PHENOL RESIN	1	YELLOW
3	接触片 CONTACT	C5210R	2	Ag CLAD
2	胶柄 KNOB	P B T	1	BLACK C
1	铁壳 FRAME	S P C C	1	Sn PLATED
序NO.	零件 PART	材料 MATERIAL	数量 QTY	备注 REMARKS

A01	接触阻抗 → 初期接触电阻 见①	王光云	06-03-27
01	机械寿命 → 负荷寿命 见①		
标号 REV	内容 DESCRIPTION	签名 SIGN.	日期 DATE

TOLERANCES UNLESS OTHERWISE SPEC.		TITLE	SIDE KNOB SLIDE SWITCH		ITEM NO	SK-23D19-MG 4.8		
UNDER 1	± 0.10	DRAWN	王光云	06-03-27	VERSION	A01	PAGE	1 OF 1
1 - 10	± 0.30	REVIEWED	张念明	06-03-27	SCALE		UNIT	mm
OVER 10	± 0.50	APPROVED	高洪	06-03-27	PROJECTION			

COMAX ELECTRONICS (HUIZHOU) CO.,LTD.