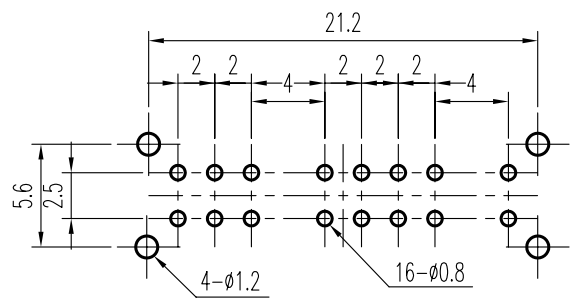


示意图 SCHEMATIC

规格 Specifications

额定负荷 Ratings	DC 30 V 0.3 A
初期接触电阻 Initial Contact Resistance	30 mΩ Max.
绝缘电阻 Insulation Resistance	DC 500 V 60 Sec. 100 MΩ Min.
抗电强度 Dielectric Voltage	AC 500 V (50~60HZ) 60 Sec.

操作力 Operating Force (gf)	A ↔ B 200 ± 100gf
负荷寿命 Operating Life With Load	10,000 Cycles



安装孔 PIERCING PLAN

6	弹片	SPRING PLATE	SUS	1	NATURAL			
5	端子	TERMINAL	C2680R	16	Ag PLATED			
4	基板	TERMINAL BASE	PHENOL RESIN	1	YELLOW			
3	接触片	CONTACT	C5210R	4	Ag CLAD			
2	胶柄	KNOB	P O M	1	G 2 - 9			
1	铁壳	FRAME	S P C C	1	Sn PLATED			
序NO	零件	PART	材料	MATERIAL	数量	QTY	备注	REMARKS

A01	机械寿命更改为负荷寿命	见 ①	刘红梅	06-06-29		
	接触电阻更改为初期接触电阻	见 ①				
	修改材料表栏	见 ①				
01			易金平	25 SEP 03		
标号 REV	内容	DESCRIPTION	签名	SIGN.	日期	DATE

DWG NO. ITEM2315

TOLERANCES UNLESS OTHERWISE SPEC.		TITLE	SIDE KNOB SLIDE SWITCH		ITEM NO	SK-42H03-G		
UNDER 1	± 0.10	DRAWN	刘红梅	06-06-29	VERSION	A01	PAGE	1 OF 1
1 - 10	± 0.30	REVIEWED	张念明	06-06-29	SCALE		UNIT	mm
OVER 10	± 0.50	APPROVED	林高全	06-06-30	PROJECTION			

COMAX ELECTRONICS (HUIZHOU) CO.,LTD.