

1

2

6

3

4

5

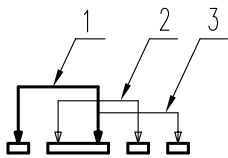
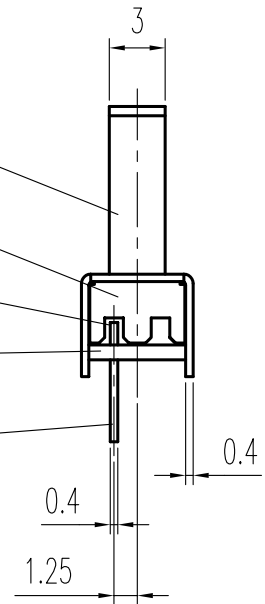


示意图 SCHEMATIC

规格 Specifications

额定负荷 Ratings	DC 30 V 0.3 A
初期接触电阻 Initial Contact Resistance	30 mΩ Max.
绝缘电阻 Insulation Resistance	DC500 V.60 Sec.100 MΩ Min.
抗电强度 Dielectric Voltage	AC 500 V(50~60HZ) 60 Sec.

操作力 Operating Force (gf)	A → B	B → C
	C → B	B → A
负荷寿命 Operating Life With Load	200±100	250±100

7	钢珠 STEEL BALL	SUS	2	NATURAL
6	弹片 SPRING PLATE	SUS	1	NATURAL
5	端子 TERMINAL	C2680R ①	4	Ag PLATED
4	基板 TERMINAL BASE	PHENOL RESIN	1	YELLOW
3	接触片 CONTACT	C5210R ①	1	Ag PLATED
2	胶柄 KNOB	P O M	1	DG 2 - 10
1	铁壳 FRAME	S P C C	1	Ni PLATED
序NO.	零件 PART	材料 MATERIAL	数量 QTY	备注 REMARKS

A01	ADD: 规格 Specifications 见 ①	王光云	06-06-18
	C2680R-EH → C2680R 见 ①		
	C2680R-EH/Ag CLAD → C5210R 见 ①		
01		易金平	20 MAY 03
标号 REV	内容 DESCRIPTION	签名 SIGN.	日期 DATE

TOLERANCES UNLESS OTHERWISE SPEC.		TITLE	SLIDE SWITCH		ITEM NO	SS-13E08-DG		
UNDER 1	± 0.10	DRAWN	王光云	06-06-18	VERSION	A01	PAGE 1	OF 1
1 - 10	± 0.30	REVIEWED	张念明	06-06-19	SCALE		UNIT	mm
OVER 10	± 0.50	APPROVED	高洪	06-06-20	PROJECTION			

COMAX ELECTRONICS (HUIZHOU) CO.,LTD.