

2P - 4T

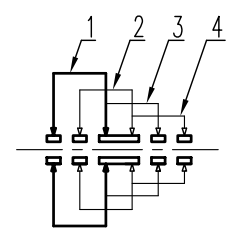
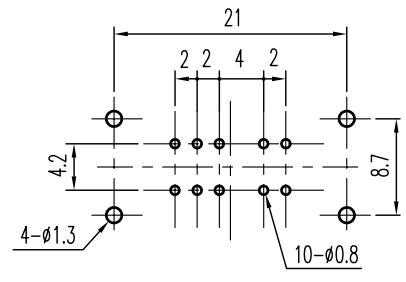


示意图 SCHEMATIC



安装孔 PIERCING PLAN

规格 Specifications

额定负荷 Ratings	DC 30 V 0.3 A
接触电阻 Contact Resistance	30 mΩ Max.
绝缘电阻 Insulation Resistance	DC 500 V 60 Sec. 100 MΩ Min.
抗电强度 Dielectric Voltage	AC 500 V (50~60HZ) 60 Sec.
操作力 Operating Force (gf)	200±100, 300±100, 450±150
机械寿命 Operating Life Without Load	10000 次 无负载 10000 Cycles no load

5	端子 TERMINAL	C2680R	10	Ag PLATED				
4	基板 TERMINAL BASE	PHENOL RESIN	1	YELLOW				
3	接触片 CONTACT	C5210R	2	Ag CLAD				
2	胶柄 KNOB	P O M	1	G 4-16 (Q)	(Q)	G 4 - 12 → G 4 - 16	Z Q J	11-3-05
1	铁壳 FRAME	S P C C	1	Ni PLATED	标号 REV	内容 DESCRIPTION	签名 SIGN.	日期 DATE
序NO.	零件 PART	材料 MATERIAL	数量 QTY	备注 REMARKS	DWG NO. ITEM0212			

TOLERANCES UNLESS OTHERWISE SPEC.		TITLE	SLIDE SWITCH		ITEM NO	SS-24D01-G		
UNDER 1	± 0.10	DRAWN	Z Q J	11-3-05	VERSION	02	PAGE 1 OF 1	
1 - 10	± 0.30	REVIEWED	Zhang nm	11-3-05	SCALE	2 : 1	UNIT	mm
OVER 10	± 0.50	APPROVED	Gao hong	11-3-05	PROJECTION			

**COMAX** INDUSTRIAL CO., LTD .